



The Line Impact Report 2025

Table of Contents

●	Director's welcome	4
●	Our impact	6
●	Exhibition programme	8
●	Learning	22
●	Wellbeing	32
●	Youth employment	42
●	Partnerships	52
●	Digital engagement	62
●	Team and board	64
●	Partners and supporters	68

Director's Welcome

2025 has been a landmark year for The Line and I am delighted to share this overview of our work and impact. Since co-founders Megan Piper and the late regeneration expert Clive Dutton OBE first envisioned The Line in 2015, the organisation has grown from a bold idea into one of the UK's leading platforms for art in the public realm, rooted in community engagement and access to art.

This 10th anniversary year was one of both celebration and delivery. Across 2025, we presented four new commissioned works by H  l  ne Amouzou, Rasheed Araeen, Mahtab Hussain and Zineb Sedira, internationally recognised artists at all career stages. We deepened our engagement with schools through new primary school partnerships, local communities through a pilot project for new parents, and continued to grow our valued wellbeing and youth employment programmes. Alongside this programme of activity, we marked the milestone with events and publications including a fundraising auction at Sotheby's and a major publication with Phaidon Monacelli that reflected both the ambition of our programme and the generosity of our supporters.

The year also marked a moment of transition for The Line. After a decade of extraordinary leadership, our co-founder Megan Piper stepped down as Director, having guided the project from its first steps into a nationally

and internationally recognised organisation. We are enormously grateful for Megan's vision and belief in the power of public art. Over seven years, I've been fortunate to play a central role in The Line's evolution by strengthening its programmes, building new partnerships, and championing its values. It's a privilege to now carry that work forward as the organisation's second Director.

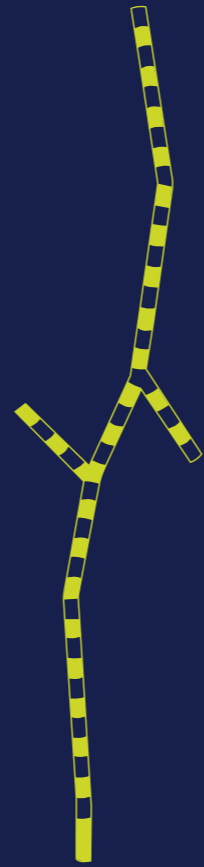
In 2025, we strengthened our organisational capacity by welcoming new colleagues to our development and finance teams, supporting our long-term sustainability and future growth. The support of our funders and partners remains essential to The Line's ability to present ambitious new work and to ensure that our programmes remain free and accessible to all. We are deeply grateful to The Line's team, board and supporters whose commitment enables the impact outlined in this report.

The Line remains focussed on our purpose to democratise access to art, enhancing opportunity and wellbeing. We build on our mission to continue to build inspired, connected and healthy communities through an ambitious outdoor exhibition and engagement programme with meaningful collaboration and measurable social impact.

Sarah Carrington
Director

Our impact

24 installations
24 hours a day
for free



**Public
Reach
5.6 million**



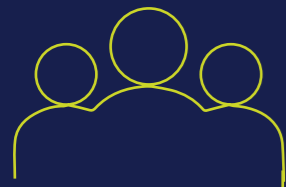
1,228
students

97
teachers
engaged

116
hours of outdoor
learning delivered

94.4%

agreed that The Line
makes experiencing
art more accessible



35
youth
employment
opportunities
generated

4
artists
commissioned



50 wellbeing walks



9 guided tours

= 348.15 miles walked

Exhibition Programme

DREAMS ARE A LANGUAGE MADE OF IMAGES.
IN CINEMA, EVERY OBJECT AND LIGHT MEANS SOMETHING,
AS IN A DREAM.

Mahtab Hussain

Please Take a Seat

Cast iron, engraved wooden slats and sandstone

Bench 187 x 102 x 90 cm; sandstone 192 x 40 x 5 cm

April 2025 saw the culmination of The Line's transformative four-year initiative, *Visible/Invisible*, with the installation in Queen Elizabeth Olympic Park of *Please Take a Seat* by Mahtab Hussain.

The sculpture is a contemporary reinterpretation of a Victorian park bench exploring representation, identity, and place through a collaborative design process with our Youth Collective. This group of 11 participants aged 18–25 is drawn from former Youth Guides and Student Ambassadors from UAL.

The collaboration with Mahtab Hussain was multifaceted, involving research workshops where Youth Collective members shared insights about East London's history and cultural significance; photographic sessions where members were captured for inclusion in the artwork; design discussions that incorporated research visits to the V&A; and workshops to share ideas for meaningful local symbols. The bench, fabricated in 2024 and installed in January 2025, integrates

EXHIBITION PROGRAMME



elements celebrating East London's heritage and diversity. It features local symbols including Bow Bells, jellied eels, the Grey heron, and references to Grime music, alongside silhouette portraits of Youth Collective members themselves, transformed from photographs to vector drawings to 3D cast iron elements. An engraved prompt, "Hello, let's make a portrait together," invites people to interact with the work, creating an ongoing dialogue between the artwork, its creators, and the community it represents.

Supported by Freelands Foundation and Westfield East Bank Creative Futures Fund, funded by Westfield Stratford City and delivered by Foundation for Future London. With thanks to Momart.



“I’ve felt proud to be a part of something I never thought I would have the opportunity to be a part of. I felt heard, that my opinions were being considered, and proud to be a part of a piece that is going to represent the real East London.”

- Youth Collective member



Hélène Amouzou

In Between

UV-Inkjet printed Dibond with matt lacquer

Original photos: 6 x 6 cm, Reproductions: 186 x 229 cm

In 2025, The Line commissioned Brussels-based photographer Hélène Amouzou to develop a photographic commission in collaboration with migrants and refugees living in East London. Born in Togo, West Africa, in 1969, Amouzou's practice has been profoundly shaped by her own journey through the asylum process in Belgium.

The project unfolded through a two-week residency hosted by The Line in April 2025. Hélène undertook research at London Museum Docklands, exploring objects with cultural and symbolic significance of journeys and arrival, before developing photographic portraits with project participants from our community partner, Praxis, an award-winning human rights charity fighting for migrant rights since 1983.

The resulting six portraits were installed and launched in June 2025 to coincide with Refugee Week. Alongside the installation, an online exhibition of the portraits and audio narratives from participants was launched on The Line's website, enabling wider audiences to engage with the project. Each participant also received a personal copy of their portrait, creating a lasting record of their involvement.

Co-curated with Arup Phase 2 and supported by Trinity Buoy Wharf Trust. With thanks to London Museum Docklands, Praxis and Royal Docks Team.

EXHIBITION PROGRAMME



Hélène Amouzou, *In Between*, 2025. Photo Credit: Reece Straw

"The project reminded me of the culture back home. It made me think of beautiful things from back home. It enlightened me about myself and the future."

- Project Participant



Rasheed Araeen

Untitled The Line

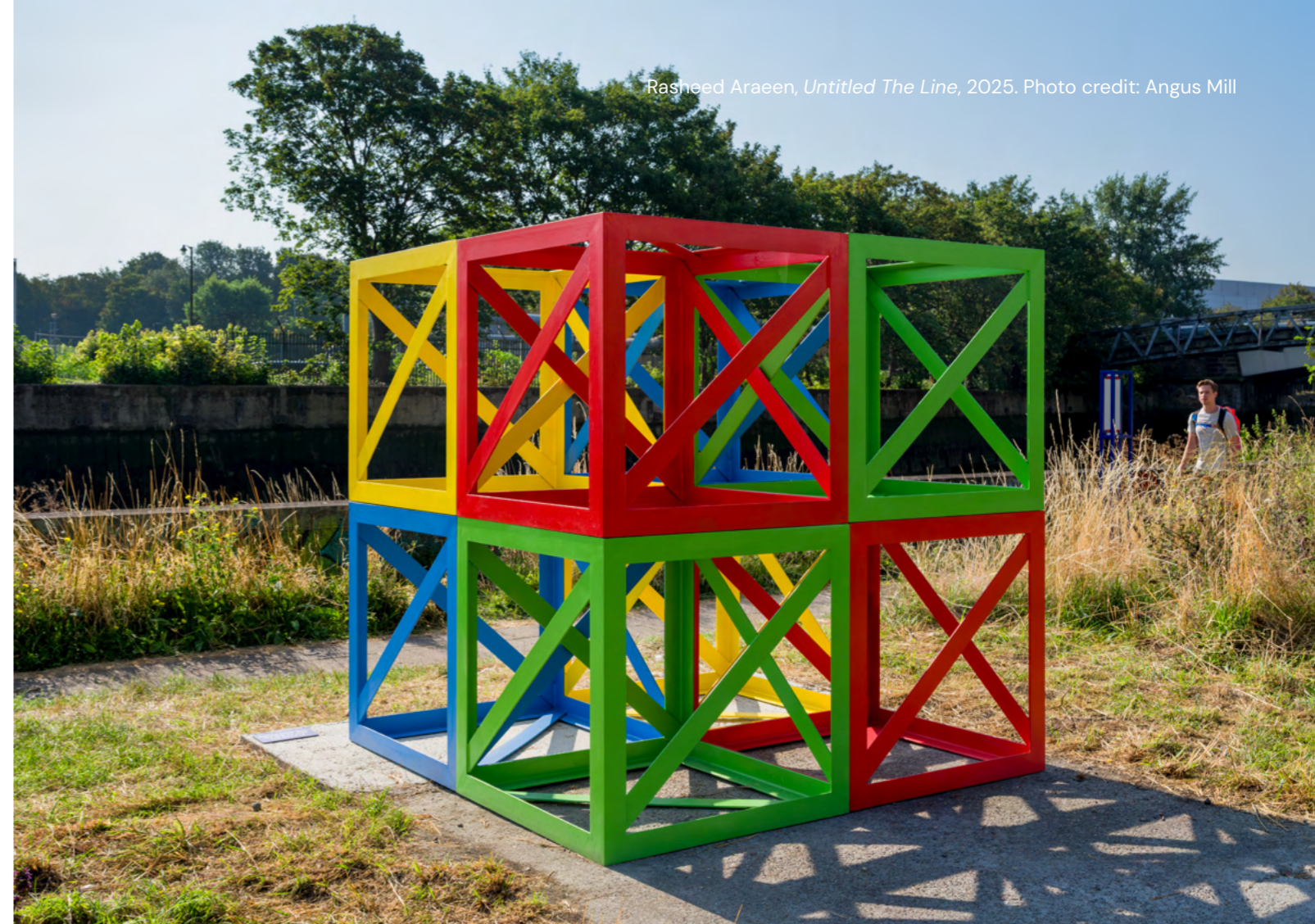
Painted steel
183 x 183 x 183 cm

In September, The Line unveiled a new sculptural installation by the Karachi-born, London-based conceptual sculptor, painter, writer and curator Rasheed Araeen.

It is sited on a piece of grassy land between the Lee Navigation Canal and Bow Creek that links the urban and natural environment. Co-curated by The Line, with the artist's studio and Arup Phase 2, the commission draws upon Araeen's experimentation with geometric structures, aiming to engage audiences in activating them, exemplifying his belief in the transformative nature of sculpture through public involvement.

We also presented a free installation of Rasheed Araeen's *Reading Room*, at The House Mill, near the artist's sculptural commission. Visitors had access to key publications and early catalogues from Araeen's career and activism over the past six decades, including editions of *Third Text*, the groundbreaking journal focused on cultural practices and

EXHIBITION PROGRAMME



Rasheed Araeen, *Untitled The Line*, 2025. Photo credit: Angus Mill

postcolonial theory founded by the artist in 1987. The Line's Youth Guides were on hand at the *Reading Room* to introduce the texts and provide background on the artist and his projects for The Line.

The Line developed a parallel public programme of activities around these two key elements, including two STEM/STEAM workshops for secondary school students delivered in partnership with the BEING division of Arup (Black Engineers Inclusion and Networking Group).

Co-curated with Arup Phase 2, and supported by Arts Council England and Henry Moore Foundation. With thanks to Canal & River Trust.

Zineb Sedira

Dreams Are a Language Made of Images

Aluminium composite material, stainless steel, aluminium and LED lighting

3.75 x 19.4 x 15.7m

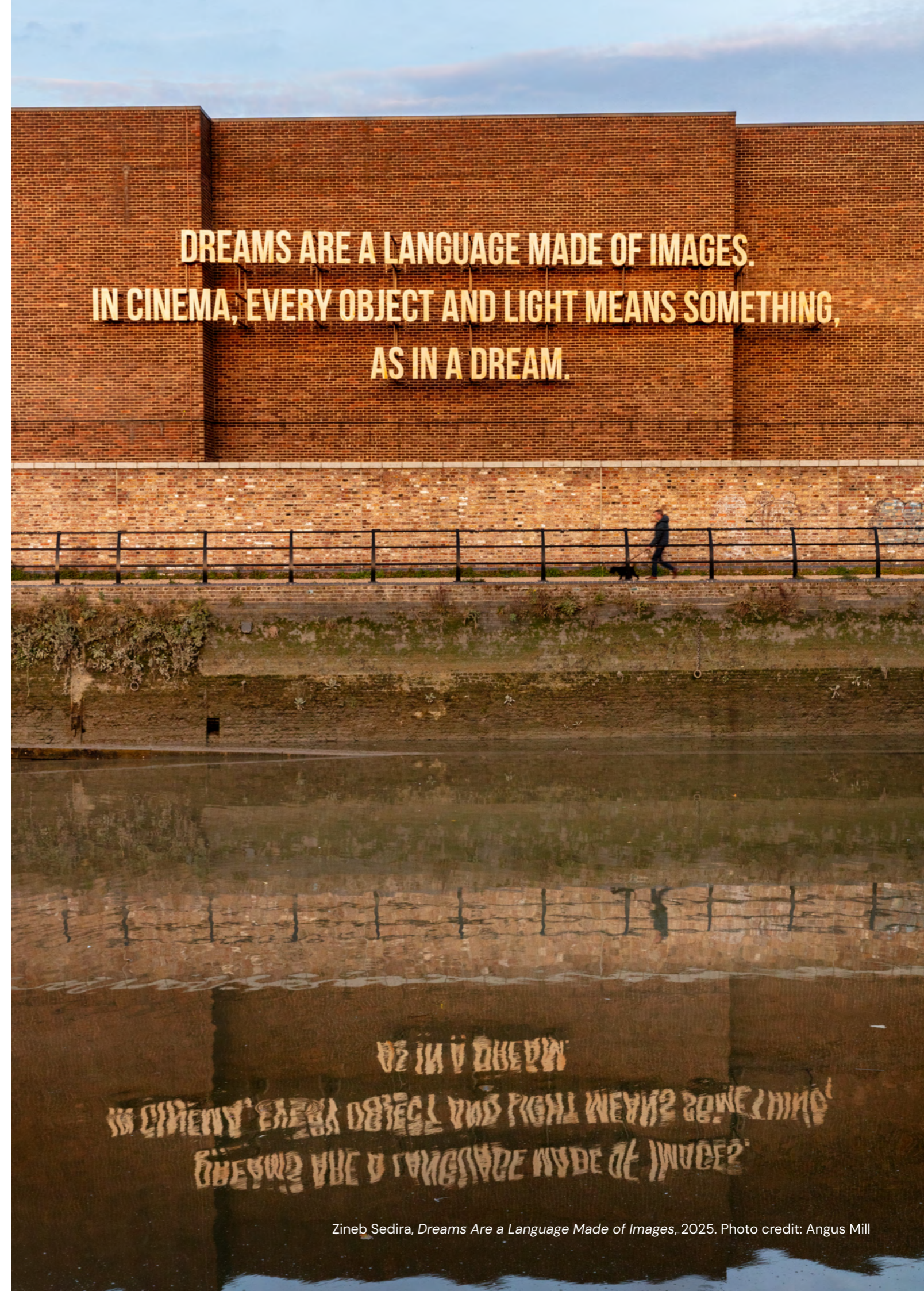
Zineb Sedira's *Dreams Are a Language Made of Images*, her first public commission in the UK, was installed at 3 Mills Studios along the River Lea in October 2025 as part of The Line's 10th anniversary programme.

Zineb Sedira is a Franco-Algerian multidisciplinary artist whose practice spans film, photography, installation and performance. Her work examines themes of identity, mobility, gender and family history, often examining personal narratives within broader social and geopolitical contexts. Much of her practice explores the lived experiences of diaspora and migration and how individual and collective memory shapes our understanding of place and belonging.

Drawing on a quote by film director Federico Fellini, this site-specific text installation reflects Zineb's established interest in themes of mobility, migration and change. Positioned on Three Mills Island, adjacent to both the River Lea and the Greenwich Meridian line, casting shifting shadows throughout the day and creating an illuminated reflection on the river at night, the work activates Three Mills as a space for cultural reflection and exchange, intersecting the ideas of cinema, migration, memory and translation.

Co-curated with Arup Phase 2, and supported by Fluxus, Zineb Sedira Commission Circle: Maria Sukkar, and those who wish to remain anonymous. With thanks to 3 Mills Studios, Neon Circus and Queen Elizabeth Olympic Park.

EXHIBITION PROGRAMME



Zineb Sedira, *Dreams Are a Language Made of Images*, 2025. Photo credit: Angus Mill

Learning

Star Lane Primary School visit to The Line. Spaces to Explore, 2025. Photo credit: Alaa Satir



Spaces to Explore

Spaces to Explore is a two-year collaborative project that integrates process-driven art, experiential learning and meaningful play, helping primary school students engage more deeply with their education, supported by Paul Hamlyn Foundation. Between January and November 2025, we have established partnerships with three primary schools in the London Borough of Newham: Vicarage Primary, Star Lane Primary and Harris Academy Chobham Primary. At each school, children engaged with a range of materials, processes and techniques, often in reconfigured learning spaces where chairs and tables were arranged in circles or activities took place outdoors. The Line delivered 31 artist-led workshops exploring new ways of learning through art, play and creativity. Each workshop engaged between 6 and 30 students, with a total of 930 student engagements with the creative learning workshops over the year.

Developing collaborative partnerships between schools, artists and The Line through the first year of *Spaces to Explore* has had a significant positive impact, enabling collaborative and social learning, and allowing both teachers and artists to co-create a supportive, adaptive and inspiring educational environment. The collaborative model has encouraged teachers and artists to try new strategies and to be

Star Lane Primary School visit to The Line. *Spaces to Explore*, 2025. Photo credit: Alaa Satir



LEARNING

responsive to student needs. Teachers appreciated the slower, exploratory pace and the opportunity to differentiate activities, while artists learned to incorporate student voice and be more flexible.

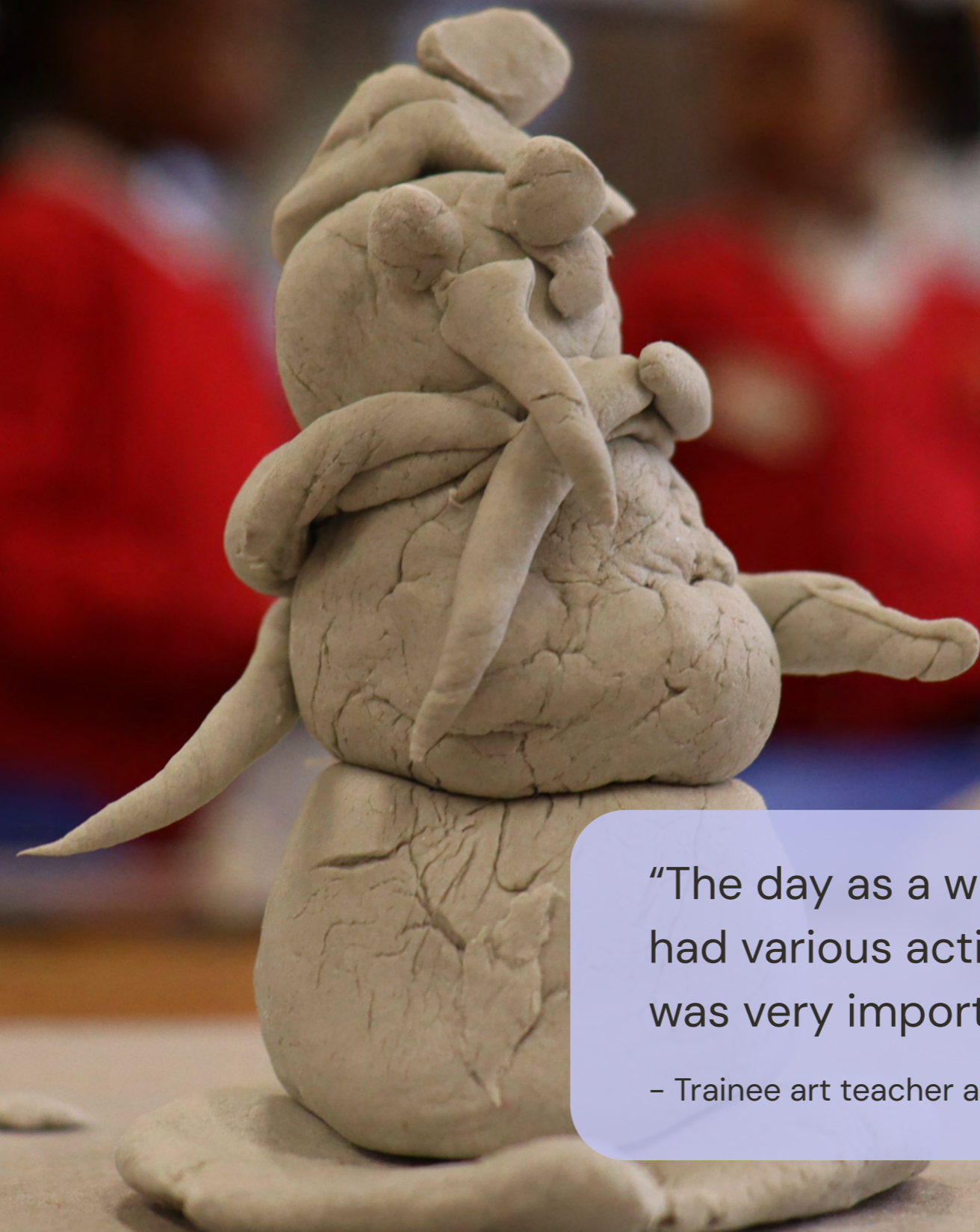
As part of *Spaces to Explore*, The Line also organised and ran three Continued Professional Development (CPD) workshops for educators, including student teachers, teachers and creative practitioners. Participants reported that the workshops provided new skills and ideas for teaching art, as well as positively impacting their wellbeing and reducing stress. Participants also valued the networking and collaboration opportunities between fellow practitioners, schools and arts institutions.

Supported by Paul Hamlyn Foundation.



“As the project comes to a close, I just wanted to say a big thank you for everything you and Juma have done for us. It has been a truly amazing project, and I have learnt so much alongside the students. I’m so glad it is two years long and that we get to see them all again next year.”

– Assistant Facilitator at Harris Academy Chobham Primary



“The day as a whole was very dynamic and had various activities. I think that the day was very important for trainee art teachers.”

- Trainee art teacher and workshop participant

School Tours

In April and June, we welcomed four groups of 30 Year 4 students from Chobham, Park, Sandringham and Charlton Lane primary schools to discover The Line on specially designed art trails. Led by artist and practitioner Remiiya Badru, students explored the Star Lane to Three Mills section of The Line, made new discoveries about wayfinding, language and symbols, and created personal maps for their family and friends.

Park Primary Newham School visit to The Line. Spaces to Explore, 2025. Photo credit: Alaa Satir



Park Primary Newham School visit to The Line. Spaces to Explore, 2025. Photo credit: Alaa Satir



Health and Wellbeing

Wellbeing Walks

In total, 50 Wellbeing Walks took place along sections of The Line in 2025. They were led by mindfulness practitioners and supported by The Line's Youth Guides. 349 participants engaged with the art of The Line, local heritage and the natural environment of the riverside walks. For the first time this year, some Wellbeing Walks were co-designed by participants, with visits to local allotments and arts spaces.



50
Wellbeing
Walks

349
participants

Retrace Your Steps

In 2025 we were delighted to receive support from the Headley Trust to continue and extend our multi-year programme supporting individuals living with early-stage dementia and their carers. The two-year project, *Retrace Your Steps*, is a creative health programme that combines guided walks in nature with creative workshops for people living with early-stage dementia and their companions.

HEALTH & WELLBEING



Retrace Your Steps, 2025. Photo credit: Lorna Powell

The project is led by an artist-facilitator and this year was delivered in partnership with Subco Trust, a local charity working with isolated and housebound elders from diverse South Asian communities in Newham. During the summer, participants and their carers worked together over six weekly sessions that explored themes of migration, trade, and the history and landscape of the River Lea through hands-on activities like rope-making, cyanotype textiles, and kite-making. Activity packs were provided to extend engagement at home, and events were organised to celebrate their creative outcomes with families and carers.

Supported by The Headley Trust. With thanks to Subco Trust.



Retrace your Steps, 2025. Photo credit: Alaa Satir

Baby Steps

In 2025, The Line piloted *Baby Steps*, a programme of free walks for mums-to-be or mums with children under two, who live in Newham, and would like to meet other mothers in the local area. 84 mothers and children under two have participated across six sessions.

Delivered in partnership with Vital Arts and Newham Nurture and supported through the Walking and Cycling Grants London, *Baby Steps* was designed to provide a friendly and welcoming environment for mums to connect with each other through nature-based walks along a section of The Line. Each session begins with a short walk along the river, incorporating relaxation exercises and gentle movement. After the walk, free refreshments are provided for the group to connect through conversation.

“Thank you so much for today’s walk, it was really refreshing and I would like to be a part of these types of activities in the future as well.”

– *Baby Steps* participant

Supported by Transport for London in partnership with The London Marathon Foundation.

HEALTH & WELLBEING

Baby Steps, 2025. Photo credit: Alaa Satir





“It was a perfect balance between talking, thinking and being.”

– *Baby Steps* participant

Youth Employment

Youth Guides training 2024. Photo credit: Alaa Satir



Training walk, Youth Guides 2025. Photo credit: Alaa Satir

Youth Guides 2025

In the summer of 2025, The Line recruited our fifth cohort of Youth Guides, young people aged between 18 and 22 who serve as the face of The Line. They engaged with the public, sharing knowledge about The Line's exhibitions and East London's rich heritage, while gaining paid work and training opportunities to develop their skills and confidence.

Following a dedicated recruitment strategy aimed at making the Youth Guide programme more diverse and have a more equitable representation of communities local to The Line, the 2025 programme received 92 applications, with significant increases in applications from men, who were previously underrepresented (110%), Black, Black British, African or Caribbean candidates (140%) and LGBTQIA+ candidates (83%).

23 Youth Guides were hired and over a two-day training period, they walked the entirety of The Line, learning about installations along the route. Youth Guides also learned the expectations and responsibilities of their role, and how their roles sat within the wider programme of The Line. The training also included a workshop on Navigating Problematic Behaviour and a workshop on Creative Walking. Six Youth Guides developed and led a creative walking tour as a part of University of East London's annual Creative Industries Festival.

YOUTH EMPLOYMENT



Training walk, Youth Guides 2025. Photo credit: Alaa Satir

Over the course of the summer, Youth Guides interacted with 956 members of the public on The Line. They shared that engaging with the public helped improve their confidence and communication skills. In September and October, Youth Guides also provided information and introductions to the art, activism and publications of Rasheed Araeen at the artist's *Reading Room* at The House Mill, accompanying his new commission *Untitled The Line*.

For many Youth Guides, interacting with the public and meeting new people were their favourite parts of the programme. Interacting with the public provided Youth Guides the opportunity to learn more about the local area directly from residents, while hearing different perspectives on the artworks enriched and deepened their own experience of The Line.

Supported by Amanda Lambert, Izabela Minkiewicz, University of East London, Active Thames, Trinity Buoy Wharf Trust and Newcore Capital.



“I just wanted to take a moment to thank you again for taking a chance on me. I’m happy to report that my first shift was a success!... I’m already thinking of ways I can add even more value on my next shift, whether that’s refining how I explain certain concepts or finding more ways to keep guests engaged. I’m feeling confident and excited for what’s ahead, and I’m looking forward to continuing to learn and grow with the team.”

- Youth Guides 2025

“Hearing about other people’s perspectives [on the art] and getting to do hands on creative activities has left me feeling inspired.”

– Youth Guides 2025



Reading Room, Rasheed Araeen, 2025. Photo credit: Alaa Satir

92

applications
received

83%

identified as
part of the
global majority

23

paid Youth
Guides
employed

Increases across key skills:

Confidence **(+14%)**

Public speaking **(+14%)**

Adaptability **(+13%)**

Partnerships



London Sculpture Week

London Sculpture Week (LSW) 2025 brought together four major cultural partners – Frieze Sculpture, the Mayor of London (Fourth Plinth and East Bank), Sculpture in the City, and The Line – for a 10-day celebration of outdoor sculpture across London (20–29 September 2025). LSW engaged more than 1,200 participants across 16 partner-led events. The Bloomberg Connects digital guide achieved 200 users at its launch peak and averaged 90 daily users through early October.

The LSW Symposium ‘Sculpting the Future: Memory, Imagination and the Public Realm’ hosted by the Warburg Institute on 26 September 2025, explored placemaking, curatorial ambition and public engagement in outdoor sculpture. The symposium was moderated by The Line’s Trustee, Dr. Jacek Ludwig Scarso, with speakers Fatoş Üstek (Frieze Sculpture), Stella Ioannou (Sculpture in the City), Sarah Carrington (The Line) and Jo Baxendale (Greater London Authority), and artist presentations by Maria Lisogorskaya and Mary Anderson of Assemble and Saad Qureshi. Dr Gus Casely-Hayford, Director of V&A East, also gave a keynote address. The discussion was recorded for public access via the LSW digital guide on the Bloomberg Connects app.

PARTNERSHIPS



Madge Gill walk and archive visit, London Sculpture Week, 2025. Photo credit: Matt Tam

The LSW website was launched for the first time this year, providing a consolidated hub for programme information, event listings and partner details.

Supported by Bloomberg Connects, official digital partner of LSW 2025.

16

partner-led
events

Engaged

1,200+
participants

90

symposium
attendees



10th Anniversary Auction with Sotheby's

To celebrate our 10th anniversary and raise vital funding, The Line was delighted to receive generous donations of artworks from Rana Begum, Antony Gormley and Saad Qureshi. Reflecting past collaborations, current commissions and works in development, the works were auctioned by Sotheby's as part of their October Contemporary Day Auction.

It was accompanied by two insightful in conversation breakfast events, the first with Katy Wickremesinghe and Rana Begum, and the second with collector, philanthropist and supporter of The Line, Christian Levett, at Sotheby's during Frieze Week. The sale was a huge success with each work exceeding estimate. The Line is enormously grateful to the artists for their generosity and support.

PARTNERSHIPS



Breakfast with Rana Begum at Sotheby's. Photo credit: Jennifer Moyes

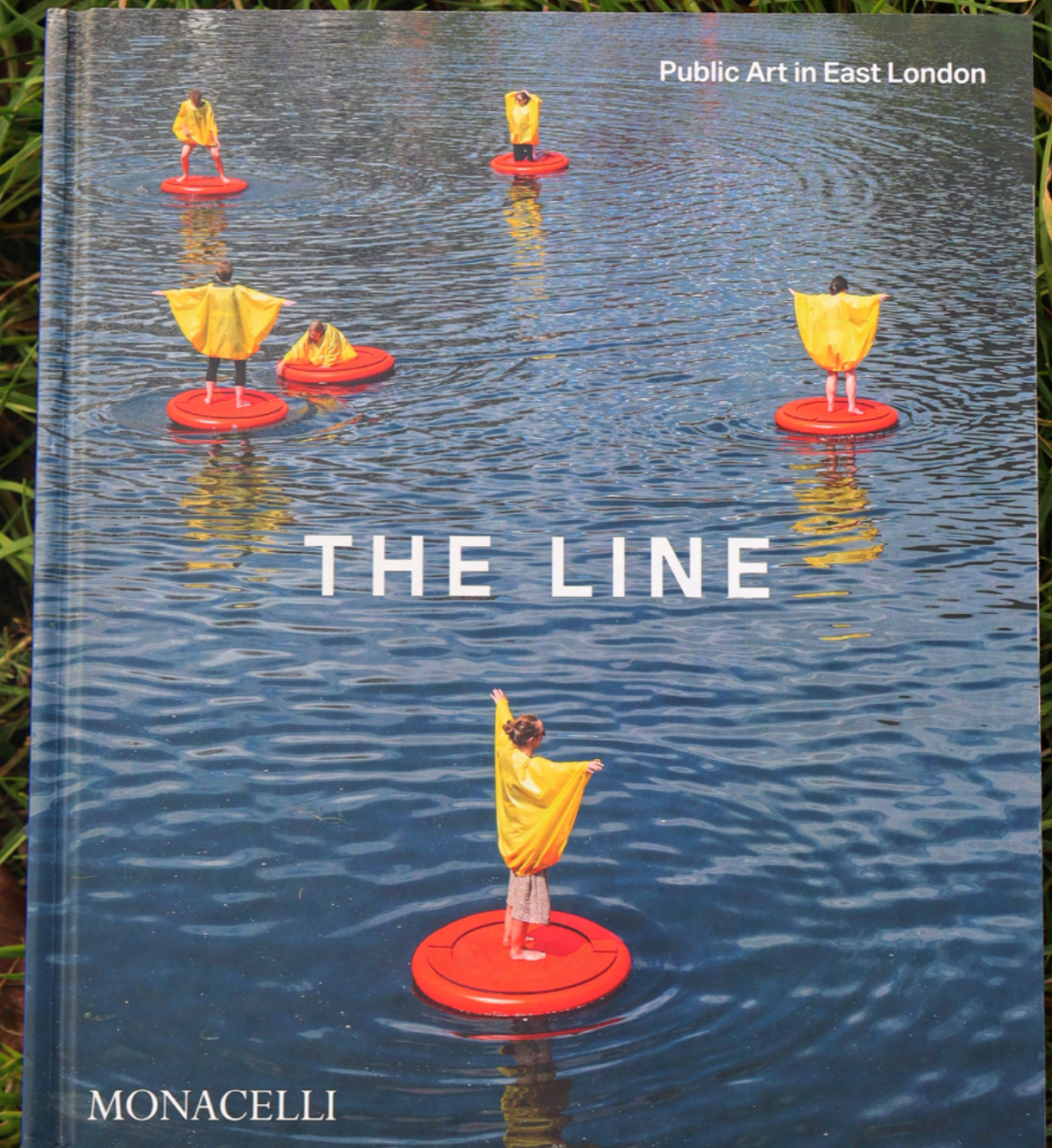
The Line: Public Art in East London Publication

November saw the launch of *The Line: Public Art in East London*, a major publication celebrating ten years of public sculpture, commissions and performances amidst the ever-changing landscapes and waterways of East London. Published to commemorate The Line's achievements over the past decade, sales of the book purchased from The Line supports our ongoing exhibition and engagement programmes.

Published with Phaidon Monacelli, the book contains more than 150 colour photographs – from eye-level images of the installations to spectacular aerial drone shots – to contextualise the route. Contributing writers include Megan Piper in conversation with Dr Gus Casely-Hayford, Emma Dabiri, Jes Fernie and Andrew Jones.

Supported by Colour One.

PARTNERSHIPS



Please scan the QR code to purchase a copy of *The Line: Public Art in East London*.

Digital engagement

+ 100%

Increase in Instagram content interactions from the previous year

Website

12,000 Users

Art Plugged documentary on The Line viewed: 163,805 times

Bloomberg Connects

3,521 Users (+75.2% on 2024)

5,240 guide starts (+18.0% on 2024)

Instagram

237,890 Views

3,700 Content interactions

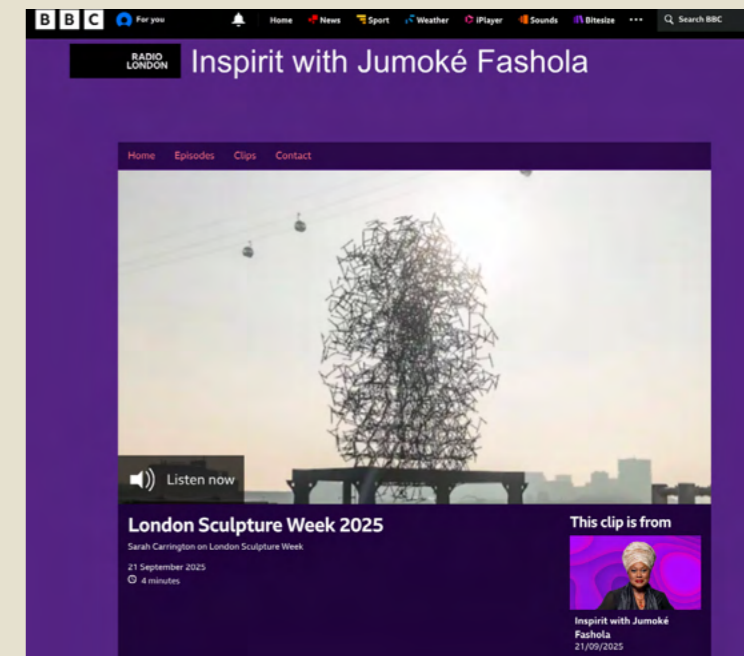
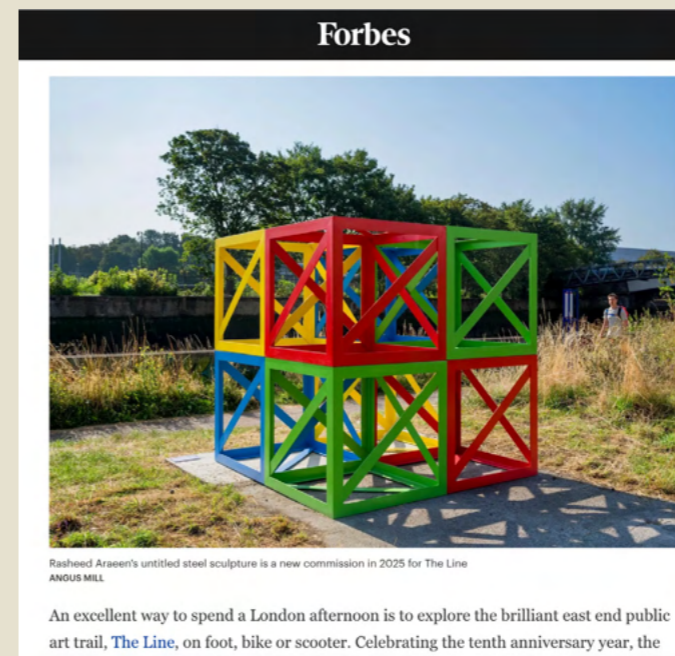
Facebook

37,763 Views

425 Content interactions

- Our digital audience growth this year includes
- 2,200 new Instagram followers 18.25% increase on 2024
 - Mailchimp net subscription growth: 557

Selected press coverage



- London Sculpture Week alone gained:
- 30 pieces of press coverage
 - Estimated total reach of 31 million

Staff

Charlotte Booth	Production and Sustainability Director
Sarah Carrington	Director
Christy Chan	Development Coordinator
Sam Dang	Director of Finance and Operations (Until January 2026)
Anthony Garstin	Director of Finance and Operations (From February 2026)
Juma Harding-Dimmock	Head of Engagment
Ting Lee	Finance Assistant
Katherine Proudlove	Head of Development
Alaa Satir	Creative Content Producer
Zahrah Vawda	Digital Communications Coordinator (Until December 2025)
Rochelle White	Engagement Producer (Schools & Young People)
Tom Wilmott	Exhibitions and Technical Coordinator



Trustees

Michele Faull (Chair)

Former CFO of Coventry Building Society and former Trustee of Bow Arts

Thomas Kador

Associate Professor in Creative Health at University College London

Susan Barty

Former Technology and IP partner at law firm CMS who spent much of her career advising The Henry Moore Foundation

Tom Price

Former corporate financier with a number of City firms for 30 years

Amanda Chambers (Treasurer)

Former CFO and Executive Director in the Charitable and Mutual Financial Services sectors

Dr Jacek Ludwig Scarso

Reader in Public Art & Performance at London Metropolitan University

Siladevi Chawda

Teacher at Southern Road Primary School, Newham

Diana Spiegelberg

CEO, Glass Castle Foundation

Howard Dawber

Deputy Mayor of London for Business

Farrah Washash

Founder of Hertech

Ivan Harbour

Architect and Senior Partner at RSHP

Partners and supporters

Our achievements across the year have been underpinned by the generous support of new and existing partners and supporters. Their contributions have been instrumental in the success of this year's programme.

Funders

Arts Council England
Bleu Blanc Rouge Fondation
Bloomberg Philanthropies
Bupa Foundation
Cockayne – Grants for the Arts
Fluxus
Foundation for Future London
Freelands Foundation
Headley Trust
Henry Moore Foundation
London Borough of Newham
London Marathon Foundation
Natural England
Oak Foundation
Paul Hamlyn Foundation
Rogers Stirk Harbour + Partners Charitable Foundation
Rothschild Foundation
The Rory and Elizabeth Brooks Foundation
Royal Docks
St William, part of the Berkeley Group
Transport for London
Trinity Buoy Wharf Trust
UK Power Networks
Vastint
Visit Greenwich
Westfield / East Bank Creative Futures Fund
Westfield Stratford City
And those who wish to remain anonymous

Partners

3 Mills Studios
Artwise
Arup
Arup Phase 2
Canal & River Trust
Cody Dock
Environment Agency
FCA Ghana
Good Hotel
Hogbens Dunphy
IFS Cloud Cable Car
KTW London
Lee Valley Regional Park Authority
London Borough of Newham
London Legacy Development Corporation
London Museum
Mayor of London
Momart
National Grid
Neon Circus
Network Rail
Plinth
Port of London Authority
Praxis
Pulse Environmental
Queen Elizabeth Olympic Park
Royal Docks Waterways
Royal Borough of Greenwich

Royal Docks

Royal Museums Greenwich

RSHP

Selco Builders Warehouse

Subco Trust

The House Mill Trust

The O2

The Stratford

Transport for London

Trinity Buoy Wharf

Patrons

Alexander Bradford

Cathy Wills Charitable Trust

The Christian Levett Collection

Colin and Helen David

Clive Gillmore

Patrick Healy

Christopher Jones and Philip Rebeiz

Sophie Lachowsky

The Mayor Gallery

I Minkiewicz

Tom Price and Patrick Vinck

Dasha Shenkman OBE

Maria Sukkar

And those who wish to remain anonymous

American Friends

Fernanda Gilligan Jess

Amanda Lambert

Jennifer Levit

Mary Ellen Oldenburg

Bettina Prentice

Sara Wolfe

And those who wish to remain anonymous

Groundbreakers Cultural Circle

AEG Europe

Royal Docks

Participating Galleries

Copperfield

Galerie Polaris, Paris

Gallery 1957

Kate MacGarry

Modern Art

Pangolin London

Simchowitz Gallery

White Cube

Legal

Boodle Hatfield

Farrer & Co

Macfarlanes

Shakespeare Martineau

Zineb Sedira, *Dreams Are a Language Made of Images*, 2025. Photo credit: Angus Mill

The Line Art Walk is a company registered in England and Wales (12392898) and a registered charity (1190073).

Our registered address is:
Third Floor, 104-108 Oxford Street, London, W1D 1LP.

the-line.org

[@TheLineLondon](https://www.instagram.com/TheLineLondon)

