

The Line

Directions

Starting at the North of The Line: Exiting the transport hubs at Stratford, follow signs to Queen Elizabeth Olympic Park, where you can start The Line from the ArcelorMittal Orbit. Make your way down to the Waterworks River just East of the Orbit and follow the river path as it takes you to High Street Stratford. Cross this main road and turn right, walking for a short time until you meet the Three Mills Wall River. Pick up the river path on the opposite side from the Sugar House Island (look for the wooden tower). Look out for The Line's red south directional signs along the route.

Starting at the South of The Line: When leaving North Greenwich station, take The O2 exit, turning left towards the InterContinental Hotel O2. Cross over the roads leading into The O2 and the hotel grounds, heading straight to the river and the Thames Path. Circumnavigate The O2 (it should be on your right) until you reach the Emirates Air Line close to North Greenwich jetty. Look out for The Line's blue north directional signs along the route.

The Thames Clipper also stops at North Greenwich. At the end of the jetty, turn right and follow the Thames Path around The O2 (it should be on your left). There is then clear signage to guide you from North Greenwich station to the Emirates Air Line.

To join The Line at the Royal Docks: Take the DLR to Royal Victoria. Exit the station onto Seagull Lane and follow the road to the right. You will see the Royal Docks in front of you.

To navigate between the Royal Docks and Cody Dock: A 10-minute journey on the DLR. From Royal Victoria station travel one stop to Canning Town. Get off here to visit the Rana Begum installation at Botanic Square, a short walk from the 'Bow Creek City Island' exit at Canning Town station. Change to the Stratford train to Star Lane (1 stop). There is currently no clear way-marked walking or cycling route between these two points so advisable to use the DLR.

To join The Line at Cody Dock: Take the DLR to Star Lane. Take the Stephenson Street exit and use the zebra crossing to walk down Cody Road. Take the first road on the left – South Crescent – Cody Dock is at the end.

Walking between Cody Dock and Three Mills - South and North directions: The River Lea meets the Limehouse Cut and Bow Creek at Twelvetrees Bridge, directly next to Bow Locks. Cross the Twelvetrees Bridge by means of the Twelvetrees Ramp (with its yellow way-marker on top) to continue along The Leaway (stone markers are laid in the ground) either South to Cody Dock or North to Three Mills.

If joining The Line from Bromley-by-Bow: Come out of the station and use the underpass to get to the other side of the A12 (the steps are immediately to your left when you exit the station). To visit Three Mills: turn right at the top of the stairs and follow the road round to Tesco's. Keeping Tesco's on your right, turn into Three Mills Lane. The House Mill is further up on the left-hand side.

To visit Cody Dock: turn left at the top of the stairs and follow the A12 to Bow School. In front of Bow School, turn left and walk over Twelvetrees Bridge. The River Lea footpath continues to the right on the other side of the bridge.

The Line

Directions

WHICH STATIONS ARE CLOSEST TO THE LINE?

Bromley-By-Bow – Hammersmith & City and District Lines

Canning Town – Jubilee Line and DLR

North Greenwich – Jubilee Line, Emirates Air Line and Thames Clipper

Pudding Mill Lane – DLR

Royal Victoria – DLR and Emirates Air Line

Star Lane – DLR

Stratford – Jubilee and Central Lines, DLR, Overground and Mainline (NB. approx. 20-minute walk to the start of The Line)

Stratford High Street – DLR

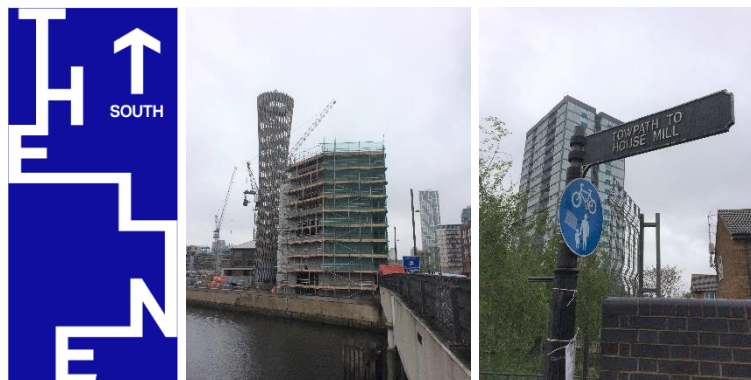
DO I HAVE TO TRAVEL FAR FROM CENTRAL LONDON TO GET TO THE LINE?

The Line is super accessible and the art is free! Waterloo to North Greenwich takes 11 minutes on the Jubilee Line. Green Park to North Greenwich takes 20 minutes on the Jubilee Line. Oxford Circus to Stratford takes 19 minutes on the Central Line (please note that the start of The Line is on the Three Mills Wall River at its junction with Stratford High Street, which is approx. a 20-minute walk from Stratford). Numerous buses serve the route.

[Click here for Transport for London's website.](#)



Entrance to The Line at North Greenwich station



Entrance to The Line at Stratford High St



Leaway markers between Stratford High St and Cody Dock